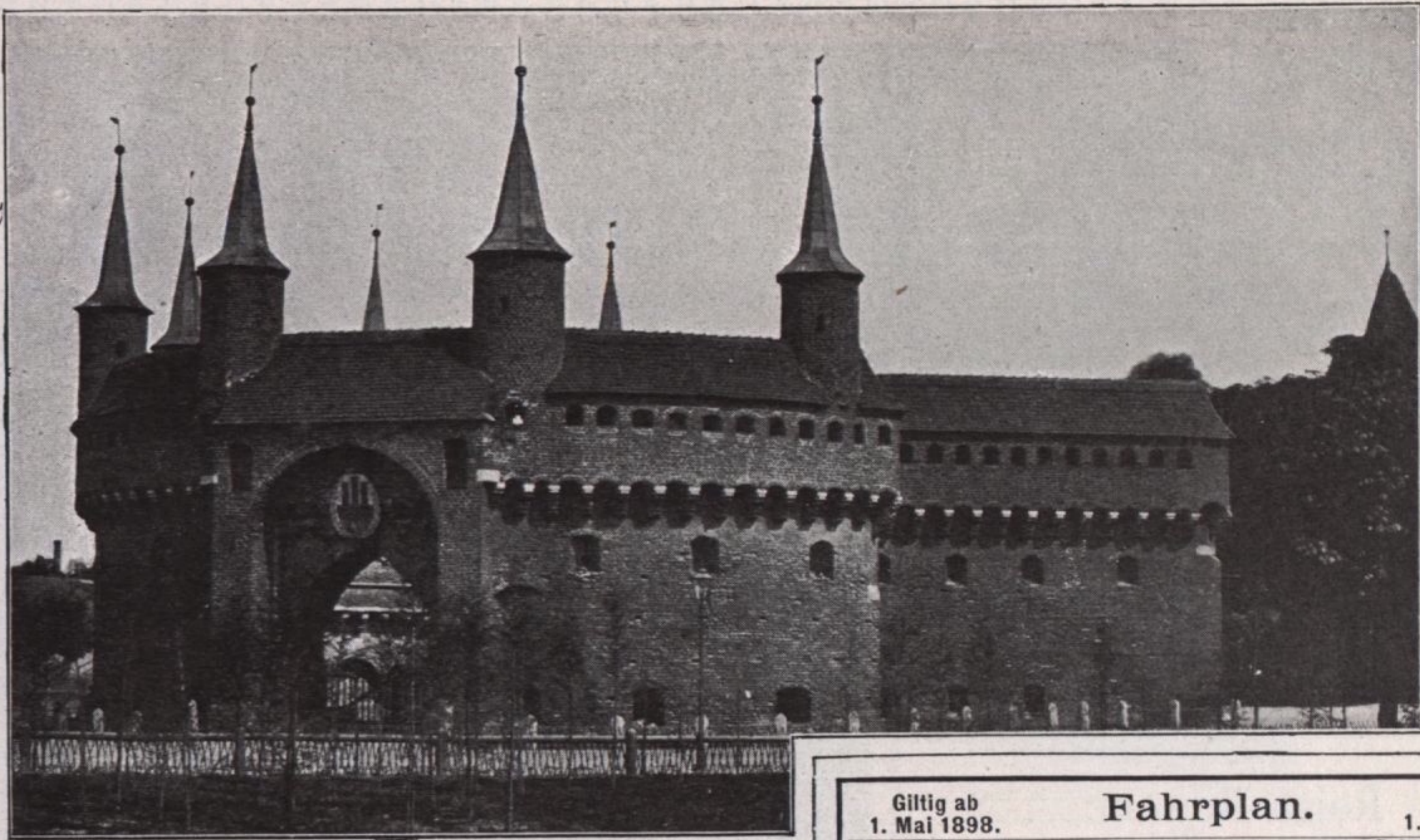


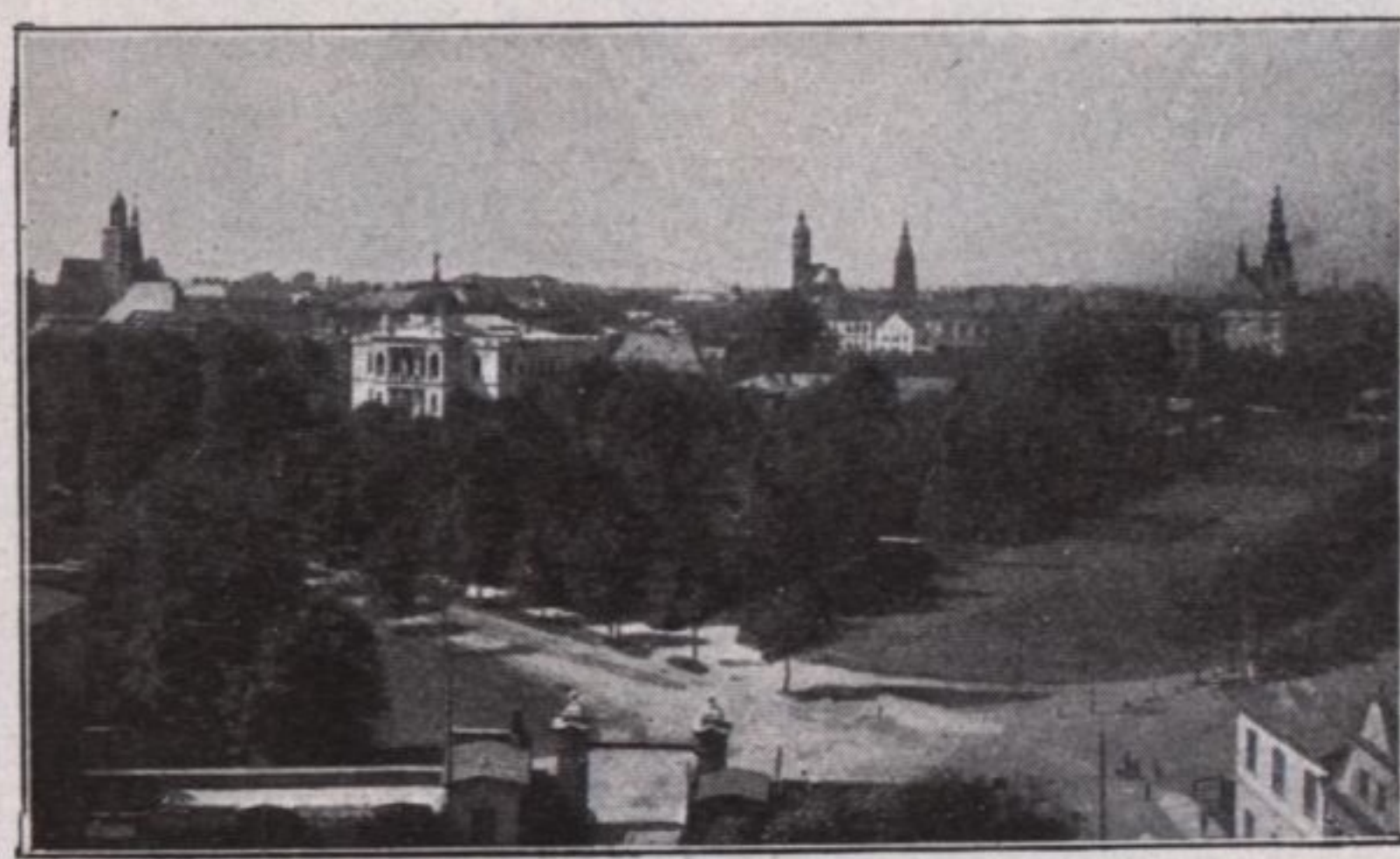
FLORIANITHOR IN KRAKAV



• BRENN •



• TROPPAV •



K. K. PRIV.

KAISER-FERDINANDS-
• NORDBAHN •

Fahrplan.

Giltig ab 1. Mai 1898.			Giltig ab 1. Mai 1898.		
Sch. 5	Sch. 1	Sch. 3	Sch. 4	Sch. 2	Sch. 6
I. II. III.	I. II. III.	I. II. III.	I. II. III.	I. II. III.	I. II. III.
8 00	12 40	9 30	6 40	3 45	9 32
11 24	4 47	2 20	12 15	11 40	5 50
4 05	10 10	5 54	10 50		
12 46	6 25	5 11	12 10	9 40	3 40
12 14	5 52	3 03	1 01	10 33	5 08
3 06	10 15	5 52	9 57	6 28	2 15
8 35	5 14	11 04	4 42	11 49	8 45
8 50	5 28	11 19	4 25	11 30	8 25
5 33	11 41	4 51	9 00	4 49	11 25
2 12	12 17	3 47	7 45	6 28	3 28
5 30	1 43	6 00		4 05	11 55
8 57	8 27	10 46		8 33	6 15
9 30	8 48	10 54		7 25	5 25
7 15		7 50		8 50	8 30
12 57	7 50	6 12	11 28	8 06	4 02
2 40	7 59	4 48	11 25	7 41	3 44
	9 03	7 41	9 29	6 55	
	6 37	5 37	1 27	12 32	
	8 15	1 15	11 15	10 15	
	2 45	10 45	8 30	5 15	
		5 50	12 55		
2 43	8 45	6 06	10 00	7 25	2 31
8 45	5 10	1 30	2 50	10 40	8 35
5 50	10 34	6 09	10 35	5 40	
	7 00	9 37	9 15	1 05	
	8 27	8 59	9 29	8 35	
6 10	11 44	7 59	8 15	3 51	9 48
4 50	10 10	11 20	5 50	7 00	11 30
10 13	5 10			11 35	6 20
	6 55	10 10	7 10	10 15	
Sch. 7/507	Sch. 11/511	P. 23/523	† O. E. Z. Mitt. Don. Smst.		
I. II. III.	I. II. III.	I. II. III.	P. 522	Sch. 512/12	P. 524/24
I. II. III.	I. II. III.	I. II. III.	I. II. III.	I. II. III.	I. II. III.
8 15	3 35	10 40	9 25	1 10	6 15
9 16	4 43	12 02	7 56	12 02	4 44
9 45	5 26	1 09	7 15	11 31	3 39
1 50	8 50	7 45	† 1 00	8 05	9 15
Sch. 7/807	Sch. 1/801	Sch. 9/809	P. 825/25	Sch. 822/22	Sch. 810/10
I. II. III.	I. II. III.	I. II. III.	I. II. III.	I. II. III.	I. II. III.
I. II. III.	I. II. III.	I. II. III.	I. II. III.	I. II. III.	I. II. III.
8 15	12 40	2 30	8 07	9 25	2 35
10 44	3 28	5 05	4 02	6 35	11 54
3 06		9 30	7 35		7 25
7 54		4 36	10 33		11 50
6 01		4 39	2 35		
6 58		2 45	4 55		12 22
					2 28
					11 25