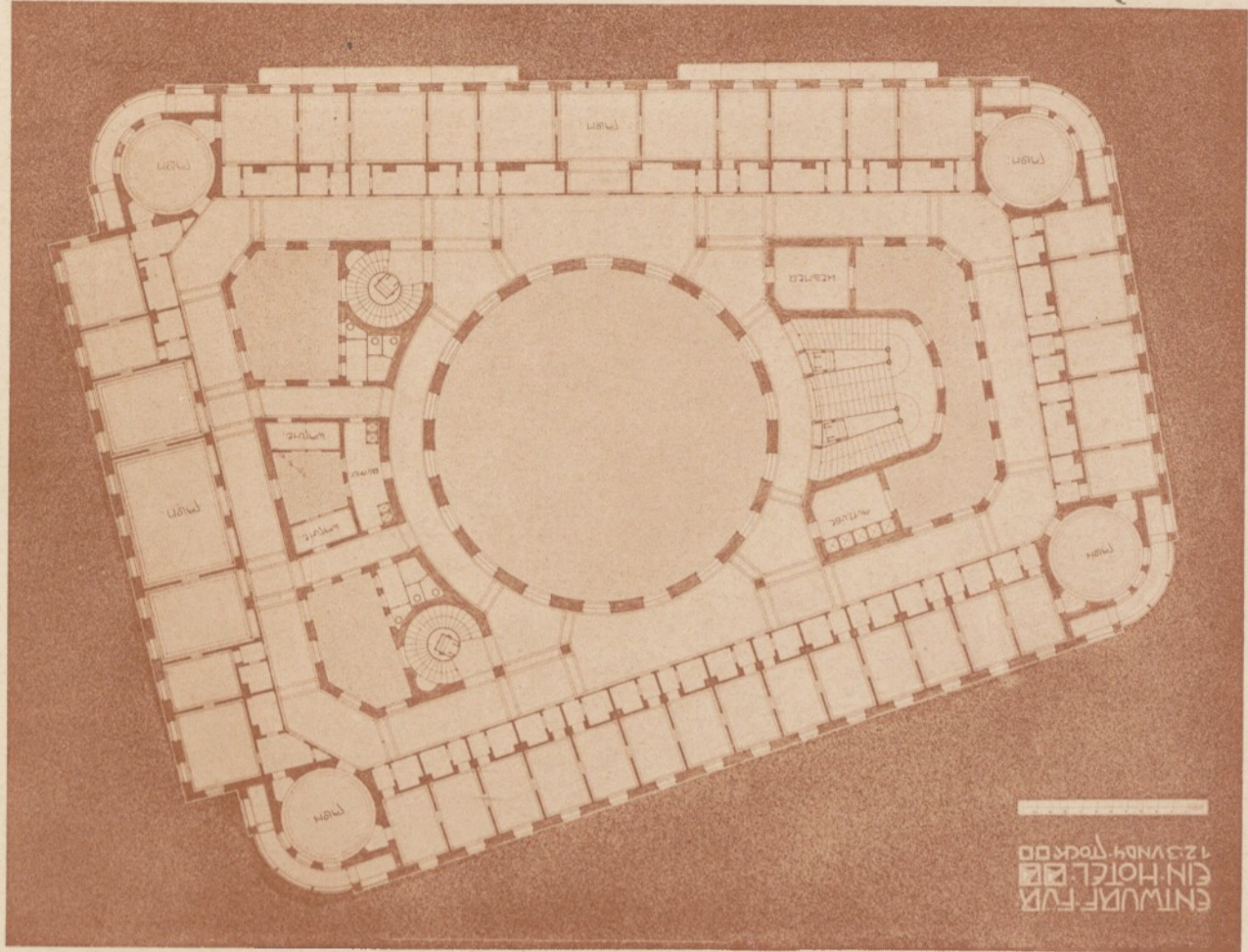


STUPE FOR THE HOTEL
PARTIAL.

VJECOSLAV BASTL, HOTEL-GRUNDRISS. SCHUL-
PROJECT. II. JAHRGANG.



ENTWURF FÜR
EIN HOTEL
123 VMD 4 100000

KARL BENIRSCHKE, HOTEL-GRUNDRISS. SCHUL-
PROJECT. II. JAHRGANG.