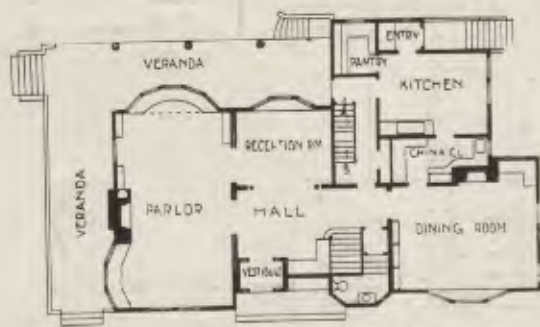
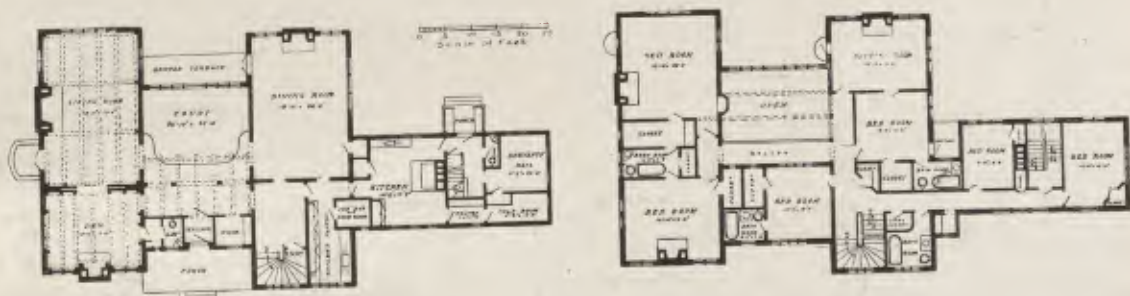




ARCH. JOHN P. THOMAS

LANDHAUS „GUNTON HALL“ IN LAKEWOOD
EINGANGSSEITE UND GRUNDRISSSE



ARCH. LORING & PHIPPS • GRUNDRISZ ZUM
HAUS FIELD IN NEWTON (VGL. SEITE 192) • • • •