

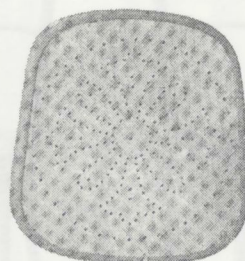
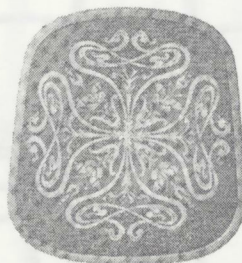
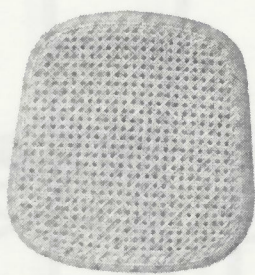
DIFFÉRENTS GENRES DE SIÈGES (petit modèle)

Fond canné

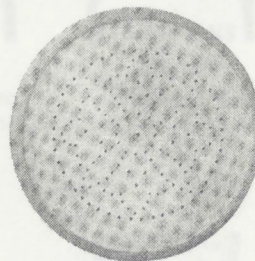
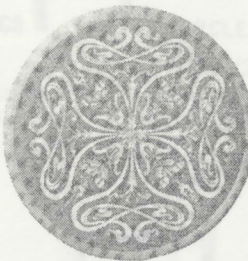
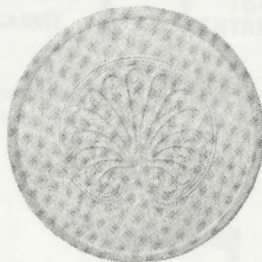
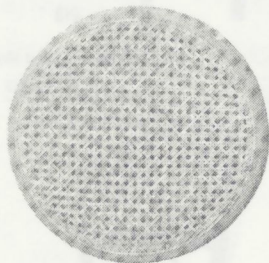
Fond bois relief

Fond thermoplastique

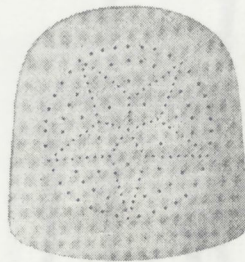
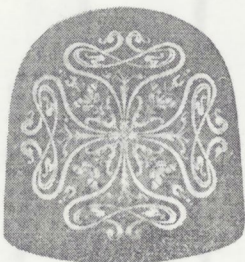
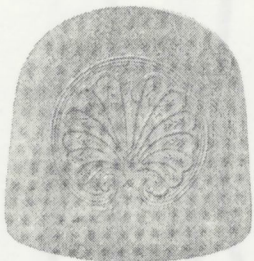
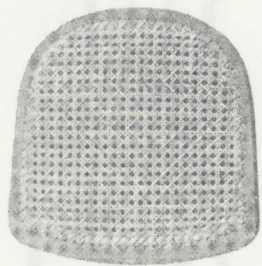
Fond perforé



Sièges carrés : 0^m38 1/2 × 0^m36 1/2 (fauteuils : 0^m44 × 0^m43 1/2)



Sièges ronds : diamètre 0^m38 1/2 (fauteuils diamètre 0^m45)



Sièges trapèzes en deux pièces : 0^m38 × 0^m37 (fauteuils : 0^m43 1/2 × 0^m41)

Les sièges des canapés se font toujours carrés et mesurent 1^m14 × 0^m45